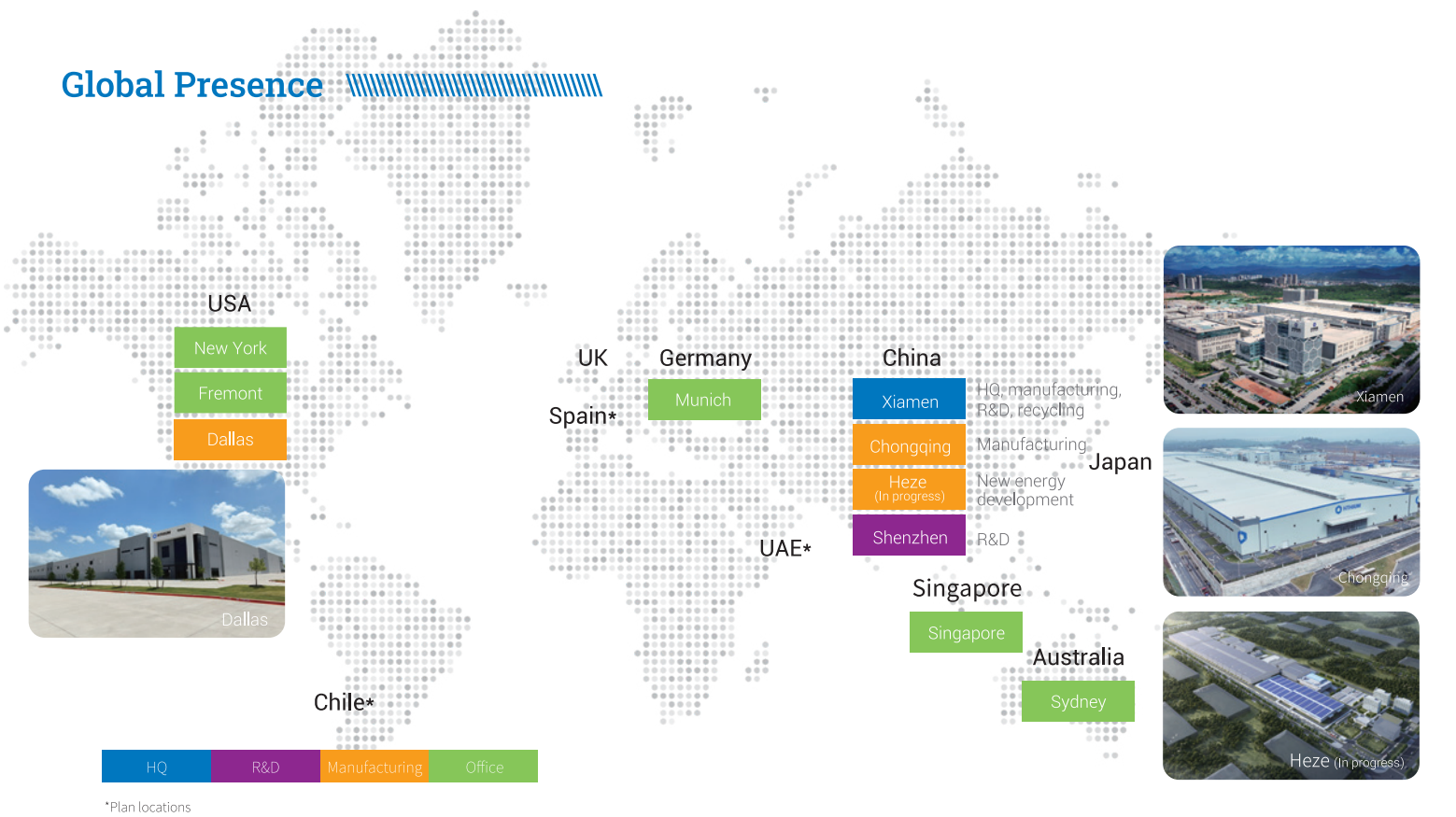




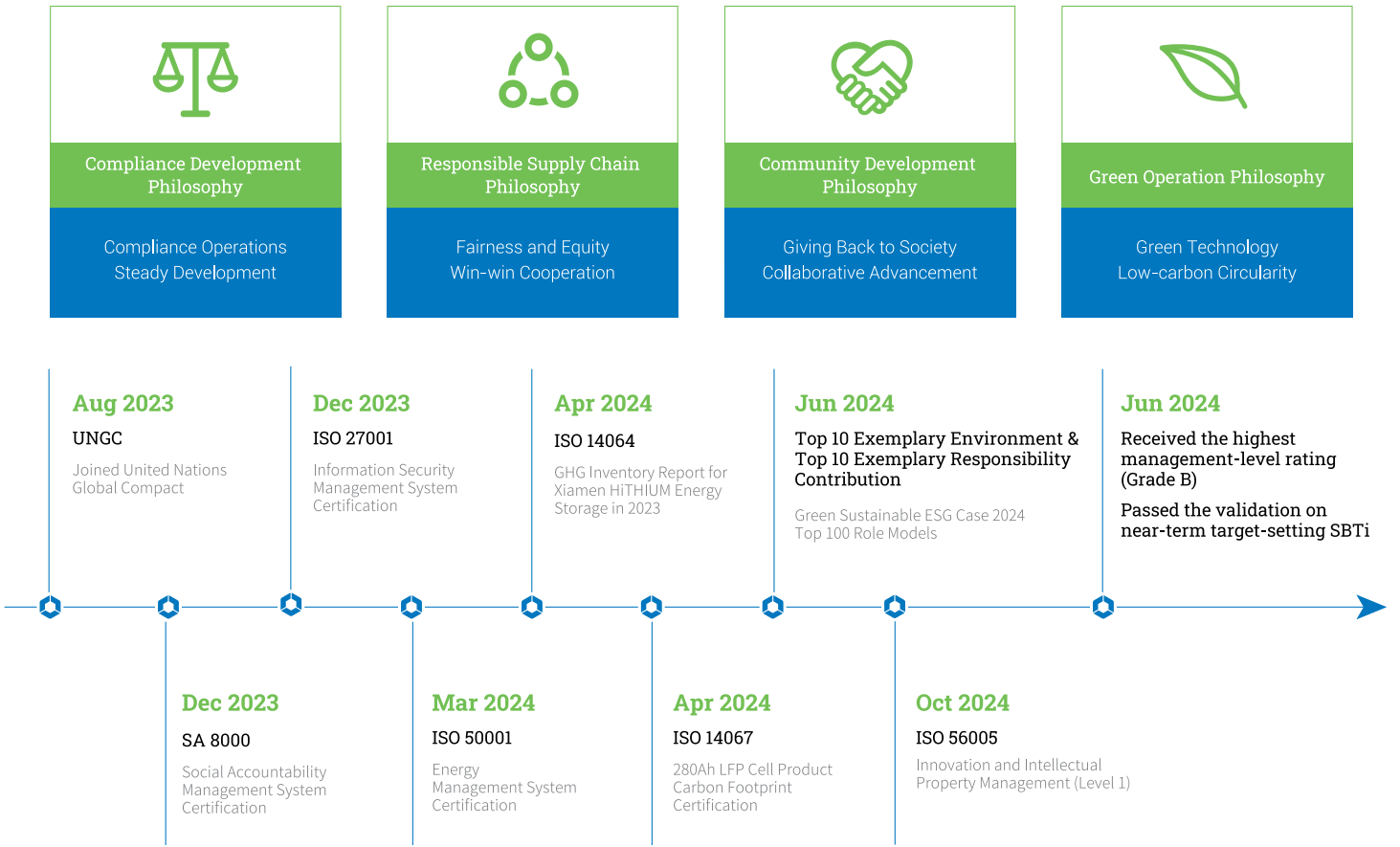
Expert in Battery Energy Storage Solution



Global Presence



ESG Milestone



R&D and Manufacturing

HiTHIUM produce energy storage batteries with superior safety, high efficiency, long cycle life and minimized cost. Our game-changing innovations contribute to technologically advanced solutions that benefit business and society.

Four Research Institutes



Battery Research Institute

Leading battery chemistry development



Control Technology Research Institute

Control technology strategy implementation



Institute of Advanced Technology

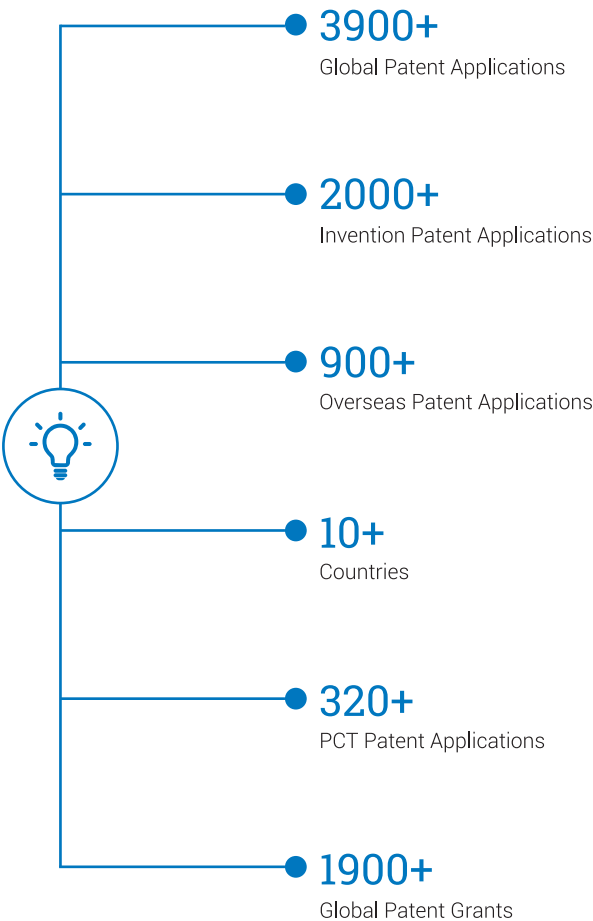
Industrialization of advanced materials



Engineering Center

Focus on advanced manufacturing capabilities

Intellectual Property Portfolio



Intelligent Manufacturing

7 Modules	Data collection, quality, production, equipment, planning, storage and process
46 Processes	Data traceability from material feeding to delivery
70+	Online management of the reports on quality, production, equipment, process, etc
97	Product characteristics – CCSC
600+	Process control points
ISO 9001	Implementing ISO 9001:2015 QMS

C&I All-in-One Energy Storage System



Product	HCL 125kW-261kWh-400
Series-parallel Mode	1P260S (314Ah cell)
Rated charge/discharge	0.5 P / 0.5 P
Rated DC Voltage	832 V
Rated Energy	261 kWh
Dimension (L*W*H)	1000*1350*2380 (mm)
Weight	≤ 2.7 t
PCS	125 kW (adjustable)
Rated AC Voltage	400 Vac, 3W+N+PE

HeroEE Residential Energy Solution

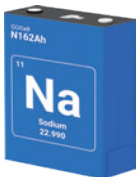


Product	HeroEE 1	HeroEE 2
Rated Power	200 W	1000 W
Rated Capacity	1004.8 Wh	2009.6 Wh
AC Input Voltage	200-240 [VAC]	200-240 [VAC]
PV Input Voltage	12-36 [VDC]	12-50 [VDC]
Cell Lifespan	11000 cls	11000 cls
Dimension (L*W*H)	210*130*285 (mm)	360*285*430 (mm)
Weight	8.26kg	18.3kg



Product	HeroEE 8	HeroEE 16
Battery Capacity	8000 Wh	16000 Wh
Rated Voltage	25.6 [VDC]	51.2 [VDC]
Charging/Discharging Voltage Range	21.6-28.4 [VDC]	43.2-56.8 [VDC]
Maximum charge/discharge current	200A/200A	200A/200A
Cell Lifespan	11000 cls	11000 cls
Dimension (L*W*H)	540.6*240*501.2 (mm)	540.6*240*781.2 (mm)
Weight	66 kg	110 kg

Energy Storage Battery Cell



Battery cell	Cell 1175Ah	Cell 587Ah	Cell N162Ah
Operating Voltage	2.5 V - 3.65 V	2.5 V - 3.65 V	1.5 V - 3.3 V
Charge & Discharge Rate	0.25 P / 0.25 P	0.5P / 0.5P	1 P / 1 P
Energy Density	≥ 180 Wh/kg	≥ 185 Wh/kg	≥ 95.2 Wh/kg
Operating Temperature	-30 °C ~ 60 °C	-30 °C ~ 60 °C	-40 °C ~ 60 °C
Dimension (L*W*H)	580.2*75.2*216.3 (mm)	286.0*73.5*216.3 (mm)	174.7*71.7*207.1 (mm)
Cycle Life	11000 cls	11000 cls	20000 cls



Battery cell	280Ah-1P	314Ah
Operating Voltage	2.5 V - 3.65 V	2.5 V -3.65 V
Charge & Discharge Rate	1 P / 1 P	0.5 P / 0.5 P
Energy Density	≥ 159.2 Wh/kg	≥ 173.2 Wh/kg
Operating Temperature	-30 °C ~ 60 °C	-30 °C ~ 60 °C
Dimension (L*W*H)	174.7*71.6*207.1 (mm)	174.7*71.7*207.1 (mm)
Cycle Life	7000 cls	11000 cls

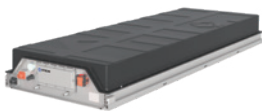
Battery cell

50Ah



Operating Voltage	2.5 V - 3.65 V	Operating Temperature	-30 °C ~ 60 °C
Charge & Discharge Rate	1 C / 1 C	Dimension (D*H)	φ64.0*151.0 (mm)
Energy Density	≥ 150 Wh/kg	Cycle Life	8000 cls

Energy Battery Module

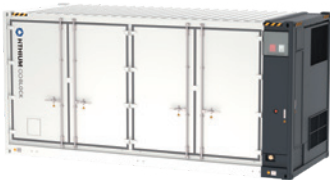


Battery Module	104kWh	∞Pack 195kWh 2h 4h
Series-parallel Mode	2P52S	1P104S 1P52S
Charge/Discharge Rate	0.5 P / 0.5 P	0.5 P / 0.5 P 0.25 P / 0.25 P
Rated Voltage	166.4 V	332.8 V 166.4 V
Rated Energy	104 kWh	195 kWh
IP Degree	IP67	IP67
Dimension (W*D*H)	800*2184*243 (mm)	1248*2230*255 (mm)
Weight	667 kg	1190 kg 1162 kg



Battery Module	2.56kWh	5.12kWh
Series-parallel Mode	1P16S	1P32S
Charge/Discharge Rate	0.5 C / 0.5 C	0.5 C / 0.5 C
Rated Voltage	51.2 V	102.4 V
Rated Energy	2.56 kWh	5.12 kWh
Dimension (L*W*H)	575*158*180 (mm)	591*308*175 (mm)
Weight	≤ 20 kg	≤ 35 kg

Liquid-Cooled Energy Storage System



Energy Storage System	5.016MWh	∞Power 6.25MWh 2h 4h
Series-parallel Mode	6*2P416S	8P416S 4P416S
Charge/Discharge Rate	0.5P / 0.5P	0.5P / 0.5P 0.25P / 0.25P
Rated Voltage	1331.2 V	1331.2 V
Rated Energy	5.016 MWh	6.25 MWh
IP Degree	IP55	IP55
Dimension (L*W*H)	6058*2438*2896 (mm)	6058*2438*2896 (mm)
Weight	≤ 40 t	≤ 48 t

Global Benchmarking Projects



ESS on Power Generation

Location:
Inner Mongolia, China

Capacity:
78MW/156MWh



ESS on Power Generation

Location:
Razlog, Bulgaria

Capacity:
25MW/55MWh



ESS on Power Transmission and Distribution

Location:
Ningxia, China

Capacity:
200MW/400MWh



ESS on Power Transmission and Distribution

Location:
Ningxia, China

Capacity:
200MW/400MWh



ESS on Power Transmission and Distribution

Location:
Jiangsu, China

Capacity:
150MW/300MWh



ESS on Power Transmission and Distribution

Location:
Colorado, USA

Capacity:
33.7MW/235.456MWh



ESS on Power Transmission and Distribution

Location:
Chongqing, China

Capacity:
100MW/200MWh



ESS on Power Transmission and Distribution

Location:
Guangdong, China

Capacity:
70MW/140MWh



ESS on Power Consumption

Location:
Zhejiang, China

Capacity:
10MW/20MWh



ESS on Power Consumption

Location:
Chongqing, China

Capacity:
400kW/1720kWh

Global Leader in All-round Energy Storage Solutions

Founded in 2019, HiTHIUM is a leading global company in new energy technology, committed to delivering all-round energy storage solutions centered on advanced energy storage battery and system technologies. HiTHIUM has cultivated robust research, production, sales, and service capabilities in global markets.

As the only pure-play energy storage company to achieve GWh-scale global shipments of lithium-ion ESS batteries, HiTHIUM's customer-centric focus drives technological and innovative products and solutions for customers across more than 20 countries and regions.



Xiamen HiTHIUM Energy Storage Technology Co., Ltd.

Address: HiTHIUM Industrial Park, Tongxiang High - Tech Zone, Xiamen, Fujian, China

Email: hithium@hithium.com **Website:** <https://hithium.com>

HiTHIUM Energy Storage Technology USA Inc.

Address: 4046 Clipper Ct, Fremont, CA 94538, United States

Email: FremontOffice@hithium.com

HiTHIUM Energy Storage Technology Deutschland GmbH

Address: Landsberger Str. 155, 80687 Munich, Germany

Email: enquiries@hithium.com



Website



LinkedIn

Version: 202506V1.0

The product data here are for reference only